

Geospatial Illustration of Groundwater Potential Zone in Pandavapura Taluk of Mandya District, India.

MADHU RAMESH*, PUTTAMADAI AH MADESHA, SHASHIKUMAR CHIKKANNA NAYAK, DARSHAN MADESH SHOBHA and SURYAKANTA ROUT

Department of Studies in Earth Science, Manasagangotri, University of Mysore, Karnataka, India.

Abstract

The current research delineates groundwater potentiality in the Pandavapura taluk to facilitate sustainable groundwater management. Multiple data layers were obtained from various sources and weighted using an Analytical Hierarchical Process (AHP). Then overlay using the Union tool in Arc GIS 10.8. This process resulted in a classified groundwater potential zone layer, which was classified into five categories. The results of this research were then validated utilizing 10-year pre and post-monsoon water depth data. The findings indicate that geospatial technologies and AHP can effectively delineate potential groundwater zones.



Article History

Received: 01 March 2023
Accepted: 16 June 2023

Keywords

Analytical Hierarchical Process; Arc GIS 10.8; Groundwater Potential Zone; Pandavapura Taluk; Sustainable Groundwater Management.

Introduction


Water is an essential component of life and must be provided in adequate amounts to meet the needs of agricultural, domestic, industrial, and the ecosystem. Groundwater is a vital natural asset that is indispensable to human wellbeing and economic growth. Due to its continued availability and superior quality, it is a significant source of supply in various rural and urban areas around the globe.¹ In a semi-arid region like Pandavapura, groundwater plays a significant role in domestic and irrigation purposes. Although a significant portion of the region is devoted to farming due to insufficient surface water

availability, groundwater is extensively used for these purposes. Groundwater fluctuation is substantial, where recharge is regulated by monsoon rainfall (June to October) and over-pumping in the pre-monsoon period (February–May), the inappropriate use of groundwater has led to water crisis issue identifying the groundwater potential zone is required for improved abstraction. Usually, Geomorphology, lineaments, lithology, slope, soil, LuLc, and drainage all influence groundwater occurrence. A Geographic Information System (GIS) could be utilized efficiently to integrate different hydrogeological concepts objectively and evaluate individuals systematically

CONTACT Madhu Ramesh ✉ madhu.r.geo@gmail.com 📍 Department of Studies in Earth Science, Manasagangotri, University of Mysore, Karnataka, India.



© 2023 The Author(s). Published by Enviro Research Publishers.

This is an  Open Access article licensed under a Creative Commons license: Attribution 4.0 International (CC-BY).

Doi: <https://dx.doi.org/10.12944/CWE.18.2.23>

to illustrate potential groundwater zone. The current investigation aim to decipher potential areas of groundwater in Pandavapura taluk by applying geospatial techniques using the AHP technique and to validate the results with groundwater level.

Area of Investigation

The study site of Pandavapura, which is in the Mandya district of Karnataka state, is located between longitude 76°36'-76°38' E and latitudes 12°25'-12°43' N with an area extent of 529.9 sq. kms.

comes under Toposheets number 57D/10, 57D/11 and 57D/14 which Survey of India (SOI) published. The Pandavapura taluk enjoys a sub-tropical climate, and the whole taluk is a semi-arid region. The area experiences summer from February-may and winter from mid-November-mid February. The rainfall season is from June to September. The area's temperature ranges from 16°C to 35°C, and the average rainfall of the area is 650mm and terrain of Pandavapura is composed of granite, gneissic rock, and schist. (Fig.1)

LOCATION MAP OF STUDY AREA

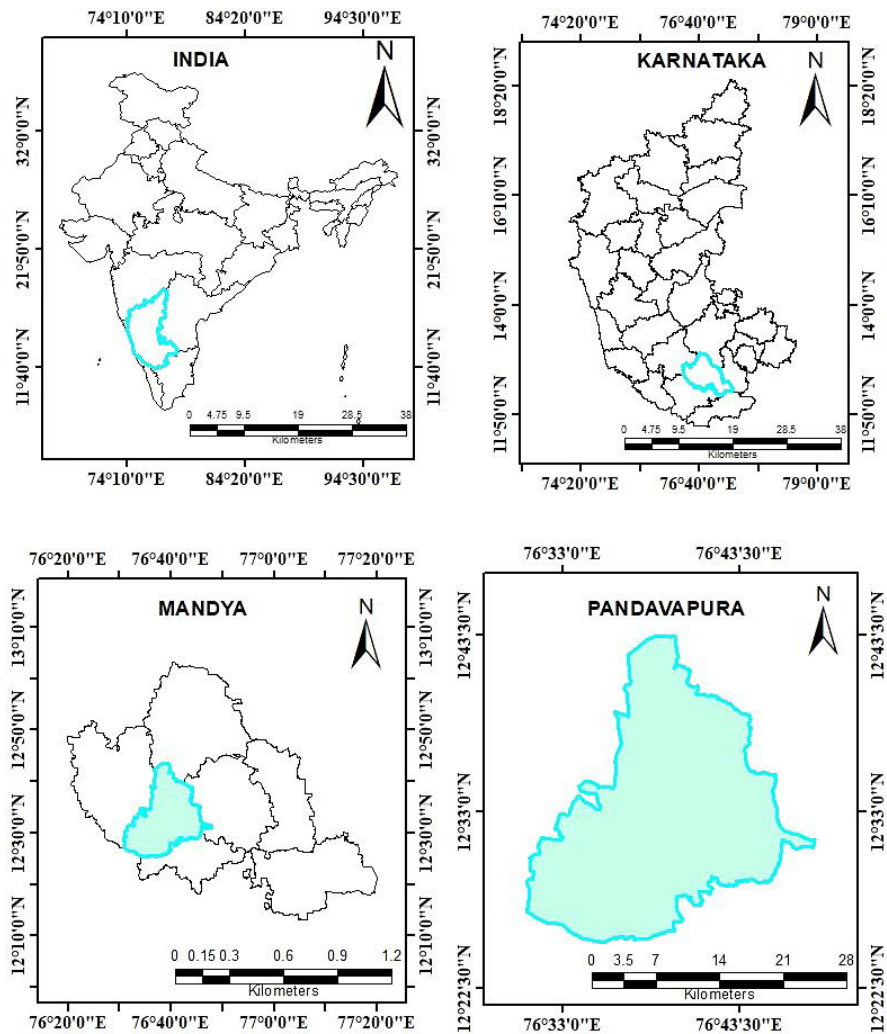


Fig. 1: Map depicting the geographical region under investigation.

Materials and Methodology

In this study, seven different layer were considered: Geomorphology, lithology, soil type, lineament density, land use/land cover, drainage density and slope. All these maps were collected from a different source and worked within the GIS system to create a database. The Karnataka State Remote Sensing Application Center (KRSAC) provided the base map, geomorphology, and lithology maps. The drainage density, slope and lineament density maps were generated utilizing Digital Elevation Model data obtained from the Shuttle Radar Topography Mission (SRTM) through the United States Geological Survey Earth Explorer (earthexplorer.usgs.gov) were utilized. The SRTM data had a spatial resolution of 30 meters. In addition, line density tools are employed to develop drainage density and lineament density in

Arc GIS 10.8. The soil maps were obtained from NBSS. LULC maps were generated from LISS-iv images at 5.8m resolution. All these layers are geocoded using the projection coordinate system UTM-WGS 1984, northern hemisphere 44. Weights have been assigned to particular themes, and ratings have been given for each feature within the theme depending upon its significance of groundwater. These scores are then incorporated into the attribute table for each thematic map. The seven maps were transformed into vector format and Overlay using the Union tool in Arc GIS 10.8. The output of this process was a combination of polygons and data associated with all coverages, which created a layer outlining the groundwater potentiality in the region under investigation and from the minor irrigation and groundwater directorate gathered the groundwater level information to validate the project.

Table 1: An AHP-based Pairwise Comparison Matrix of seven layers was developed to evaluate potential groundwater zones.

Factor	Geomorphology	Lineament Density	Lithology	Slope	Soil	Lulc	Drainage Density	Weight
Geomorphology	7	6	5	4	3	2	1	0.38
Lineament Density	7/2	6/2	5/2	4/2	3/2	2/2	1/2	0.19
Lithology	7/3	6/3	5/3	4/3	3/3	2/3	1/3	0.12
Slope	7/4	6/4	5/4	4/4	3/4	2/4	1/4	0.10
Soil	7/5	6/5	5/5	4/5	3/5	2/5	1/5	0.08
Lulc	7/6	6/6	5/6	4/6	3/6	2/6	1/6	0.066
Drainage Density	7/7	6/7	5/7	4/7	3/7	2/7	1/7	0.064

In the matrix involves analyzing thematic maps and assigning numerical values to represent the priority for groundwater potentiality mapping. A ranking of 7 is given for the highest priority, while 1 is the lowest. The weights of each groundwater governing parameter can be determined by summing up the values in each column of the matrix and dividing the number of factors by the sum of its respective column.

Example : Geomorphology = $7 + (7/2) + (7/3) + (7/4) + (7/5) + (7/6) + (7/7)$
 $= 18.15$

Dividing the total number of factors 7 by the total summed value of its column $18.5 = 7/18.15 = 0.3856 = 0.38$

Likewise, the weighting factors are computed for the remaining factors.(Table 1)

Result and Discussion

Geomorphology

Geomorphological elements like pediments, pediment inselberg complex, pediplain, hills, reservoirs, rivers, and all influence drainage patterns runoff, stream course, and infiltration rate, in turn, the region's groundwater availability.² Over 75.8% of the region is characterized by pediplain, which is formed due to weathering of rocks. The groundwater potential in this area is good. Pediment is the erosional feature developed due to weathering of hills which has a moderate slope. An Area over 7.02% is covered by pediments having moderate groundwater potentiality. The pediment inselberg

complex is dotted with some inselberg that cannot be separated and mapped as individual units with moderate groundwater potentiality. Reservoirs are established in the southwestern region, with good

groundwater potentiality. The southern portion of the region exhibits signs of rivers and streams, while certain areas demonstrate excellent potential for groundwater. (Fig. 2)

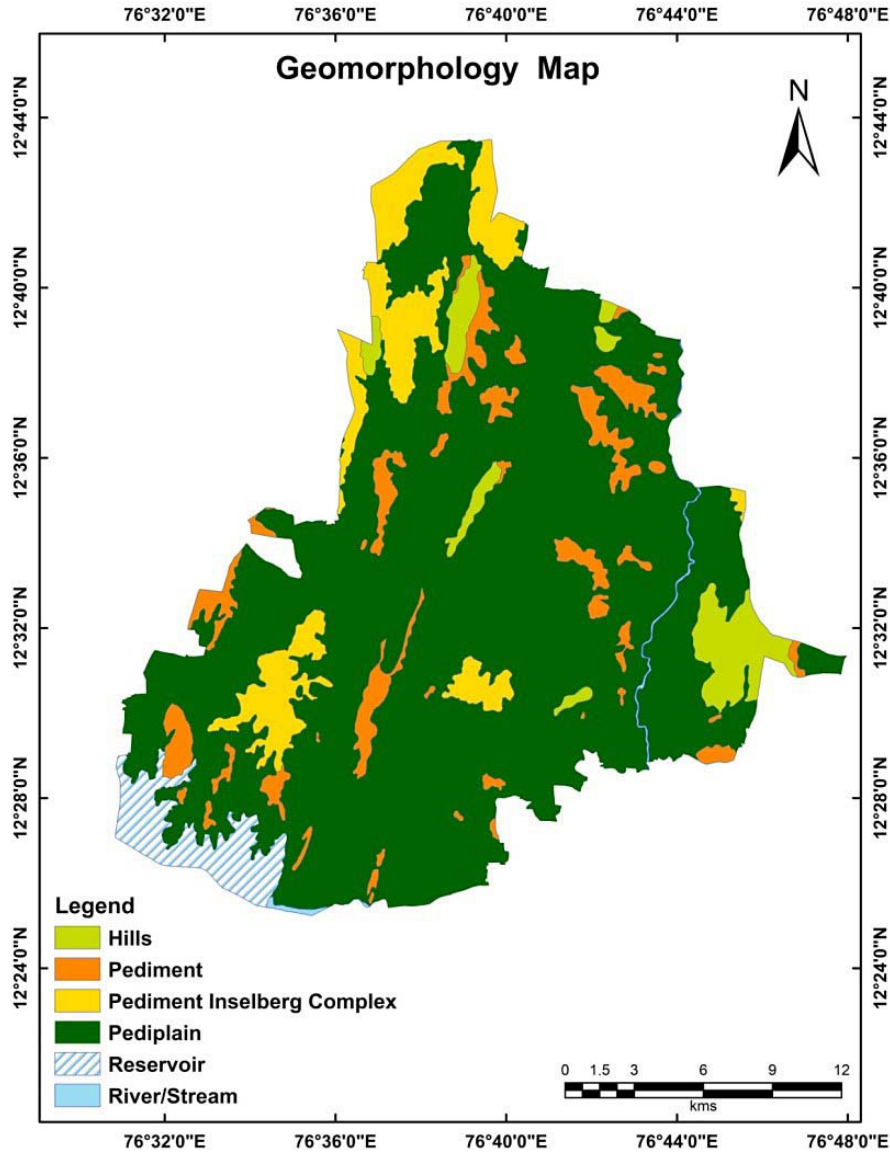


Fig. 2: Geomorphology Map

Lineament Density

Intersections of geological features like lineament suitable for groundwater replenishment, and the concentration of groundwater diminishes with distance from lineaments hence the high lineament density is beneficial for groundwater potentiality.³

The lineament density ranged from 0.0001 to 0.36 km/km² and was divided into five groups: 0.001-0.005, 0.006-0.008, 0.009-0.013, 0.014-0.021, 0.022-0.36 representing very low, low, moderate, high and very high respectively. Therefore very high densities of lineament were found to have

good potentiality for groundwater. Thus the areas with a high density of lineaments given a higher rating subsequently, the low lineament density

had the poorest potential and was unsuitable for groundwater withdrawal so those with a low density given a lower rating. (Fig. 3)

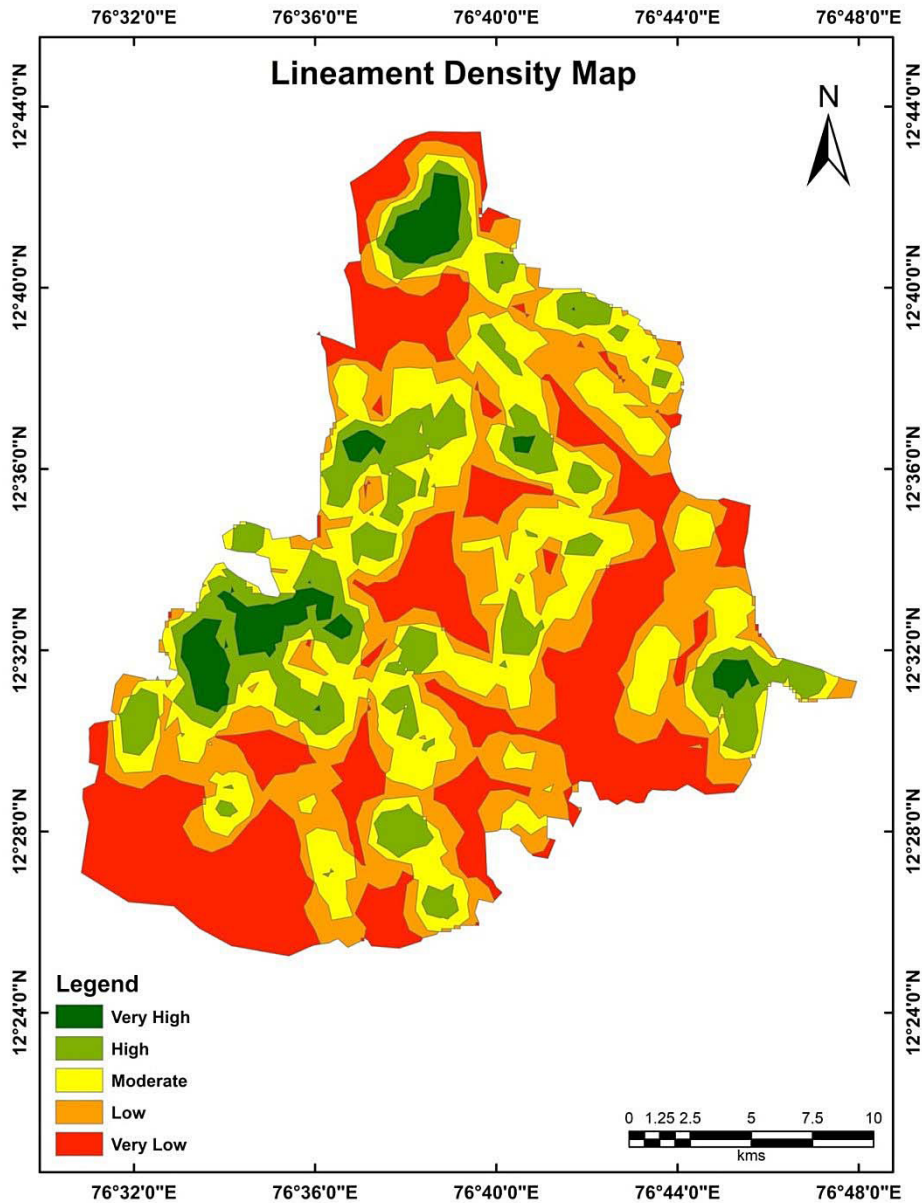


Fig. 3: Lineament Density Map

Lithology

The properties of various water-bearing lithologic formations influence groundwater occurrence and transport.⁴ The primary geological formation of this area includes migmatites & granodiorite tonalite

gneiss (75.9%), pink & grey granite (15.5%), metaultramafite (4.7%), and also amphibolitic meta pelitic schist (1.9%) of archean age and 1.9% metabasalt and tuff of archean to proterozoic age. The permeability of the subsurface is governed by

the rock kind present and can influence groundwater flow. The study area is composed of solid rock, which lacks primary porosity, Secondary porosity, however, is a major factor in groundwater recharging. The metaultramafite and granite have poor

groundwater potentiality. Schist, metabasalt, and tuff have moderate groundwater potentiality. The fractured zones and contours in the gneissic formation suggest that the area has prominent potential for groundwater. (Fig. 4)

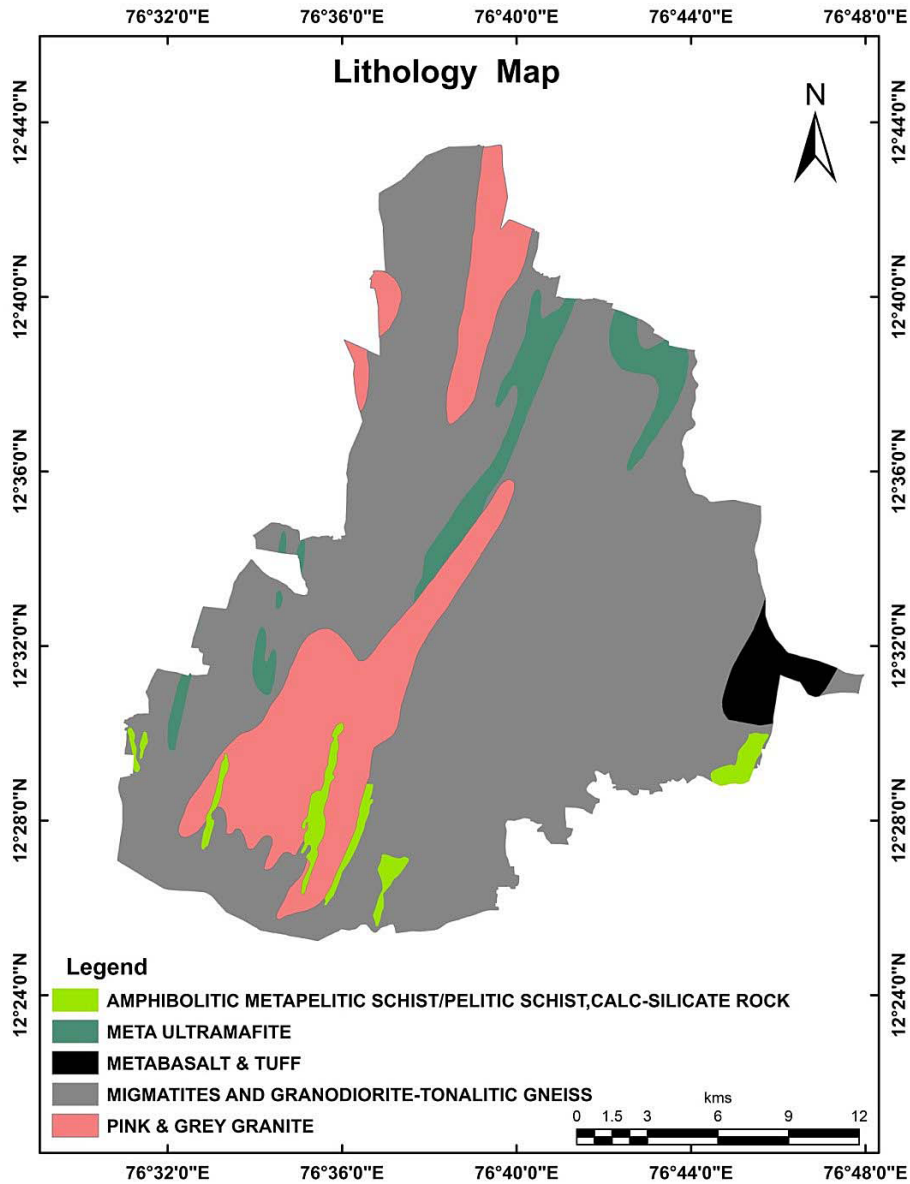


Fig. 4: Lithology Map

Slope

A slope is just an elevation change of the ground; consequently, the water motion is influenced by gravity impact. The slope represents elevation

change and affects land stability in an area. In the area of research, the slope ranged from 0-49.15°. This was reclassified into five classes: 0-1° Flat, 1-3° Gentle, 3-5° Moderate, 5-15° Steep, and

15-49° Very steep. The slope significantly influences groundwater potentiality as the steeper the angle, the more runoff and less infiltration there is. On the other hand, a region with a shallow slope will be more likely to retain water, resulting in a better infiltration

rate. The hills in the northern and eastern regions are marked by steep slopes signifying areas with low groundwater potentiality. Flat and gentle slopes have good potential for groundwater. (Fig. 5)

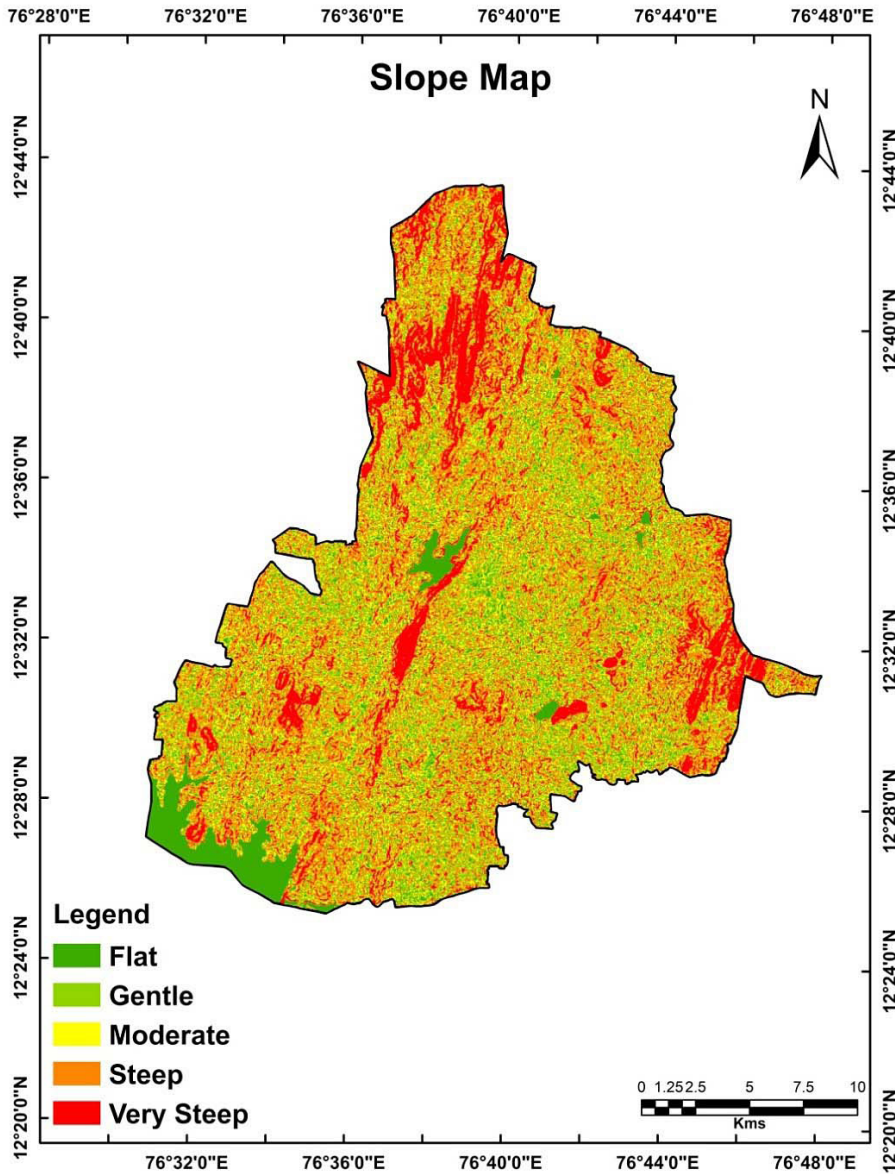


Fig. 5: Slope Map

Soil

The soil's infiltration rate is based on its components, with each soil having its own distinct infiltration capacity.⁶ This soil feature could identify potential groundwater areas in a region. Typical soil types in

the area could include clay soil, gravelly clay soil, gravelly soil, sandy soil, and loamy soil. Loamy soil and sandy soil (Inceptisols) cover over 25.4% of the southern parts and also occur as a vein in the eastern and northeastern parts. Clay/gravelly

clay/gravelly soils (alfisols) covered over 75.6% of the area. The water percolation capacity is less due to low porosity and permeability. This group was

allotted a lower rank, and the inceptisols soil group was given a higher one due to high porosity and permeability. (Fig. 6)

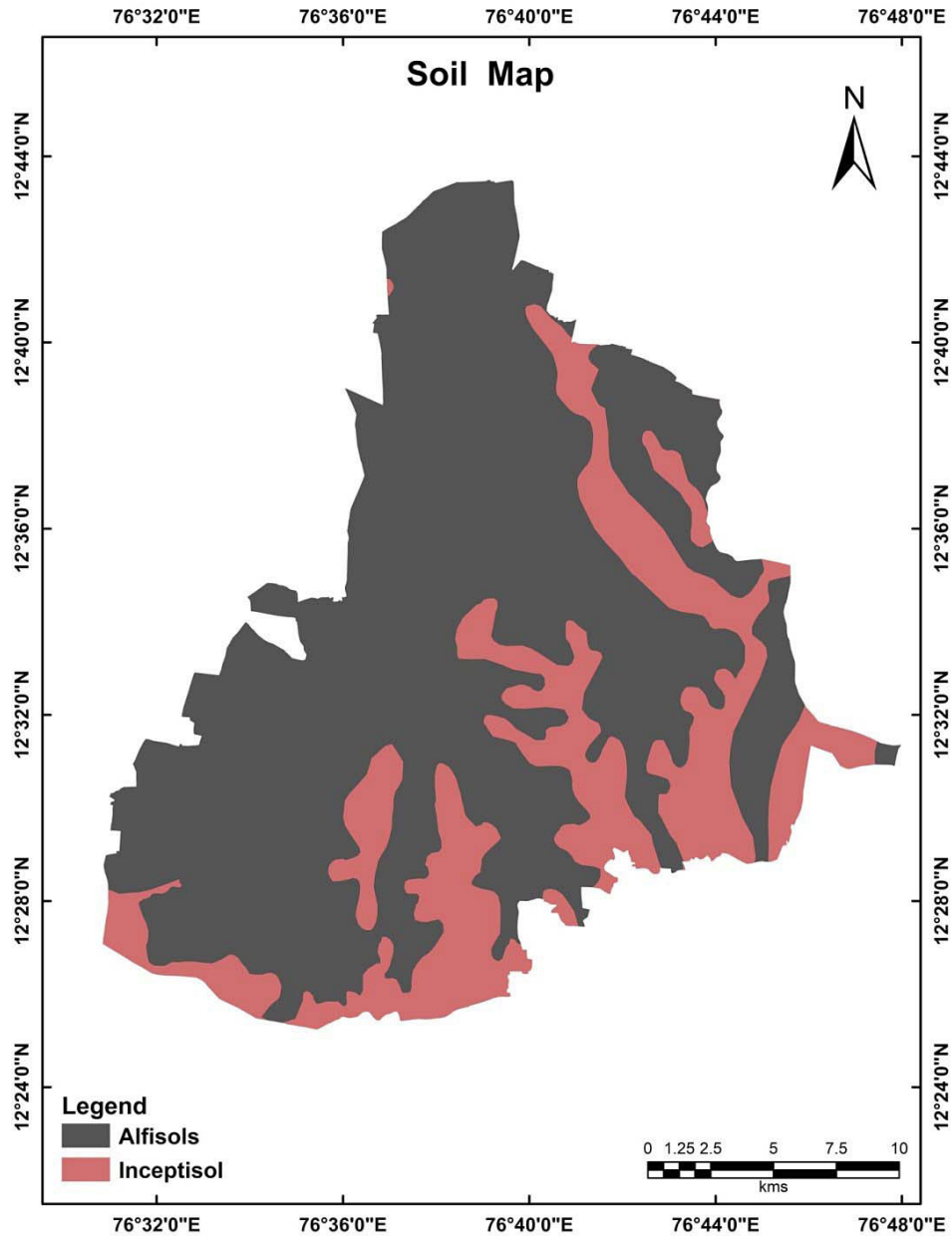


Fig. 6: Soil Map

Drainage Density

Drainage density can be expressed as the ratio between the combined length of rivers present within a given

region and the corresponding area of that region. Analyzing the structure of the drainage network can provide insight into the peculiarities of the area's

groundwater recharge. The drainage system's quality is demarcated by lithology, and it depicts the rate of infiltration.⁷ The drainage density ranged from 0.03-5.09 km/km² and was divided into five groups: 0.03-0.52, 0.52-1.04, 1.05-1.77, 1.78-3.09, 3.10-5.09 representing very low, low, moderate, high and very

high respectively. Lower densities of drainage leads to less runoff and more significant groundwater potential. Thus, areas with high drainage density are given a low rating, while those with a low density are given a higher rating. (Fig. 7)

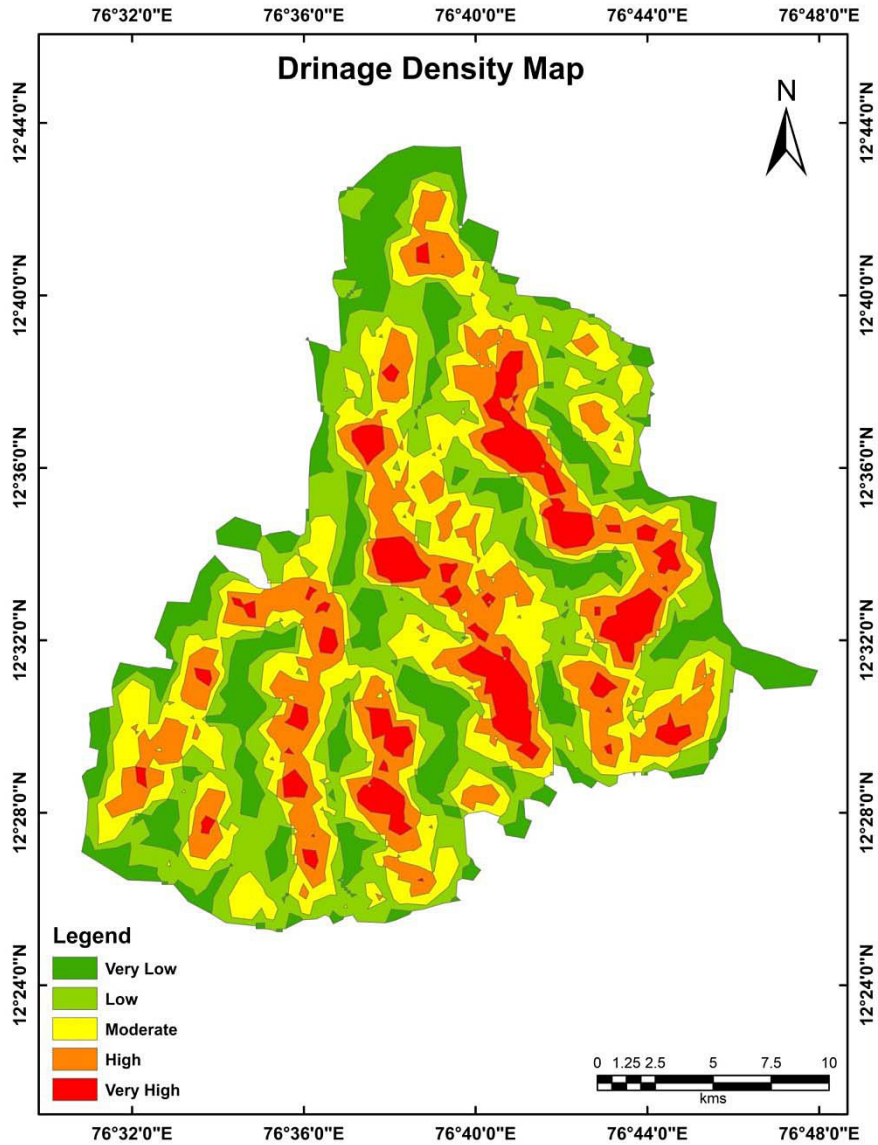


Fig. 7: Drainage Density Map

Land Use/ Land Cover

Groundwater reserves primarily control the area's LULC and, as such, play an essential aspect in efficient groundwater management.⁸ Agriculture

land, Built-land, forest, wasteland, and waterbodies are the leading kind in investigated localities. Around 74.6% of the total area is Agriculture, 1.5% under Built-up land, 5.7% under forest partly distributed

along the eastern and northern parts, 11.8% under wasteland considered as hills and rocky exposure, and 6.1% under underwater bodies. The infiltration rate is high in waterbodies, agricultural land, and forest area, whereas the infiltration frequency is low

in wasteland and built-up land. Land use/land cover categories like wasteland and built-up areas have lesser potentiality, and agricultural land and forest have higher potentiality for groundwater. (Fig. 8)

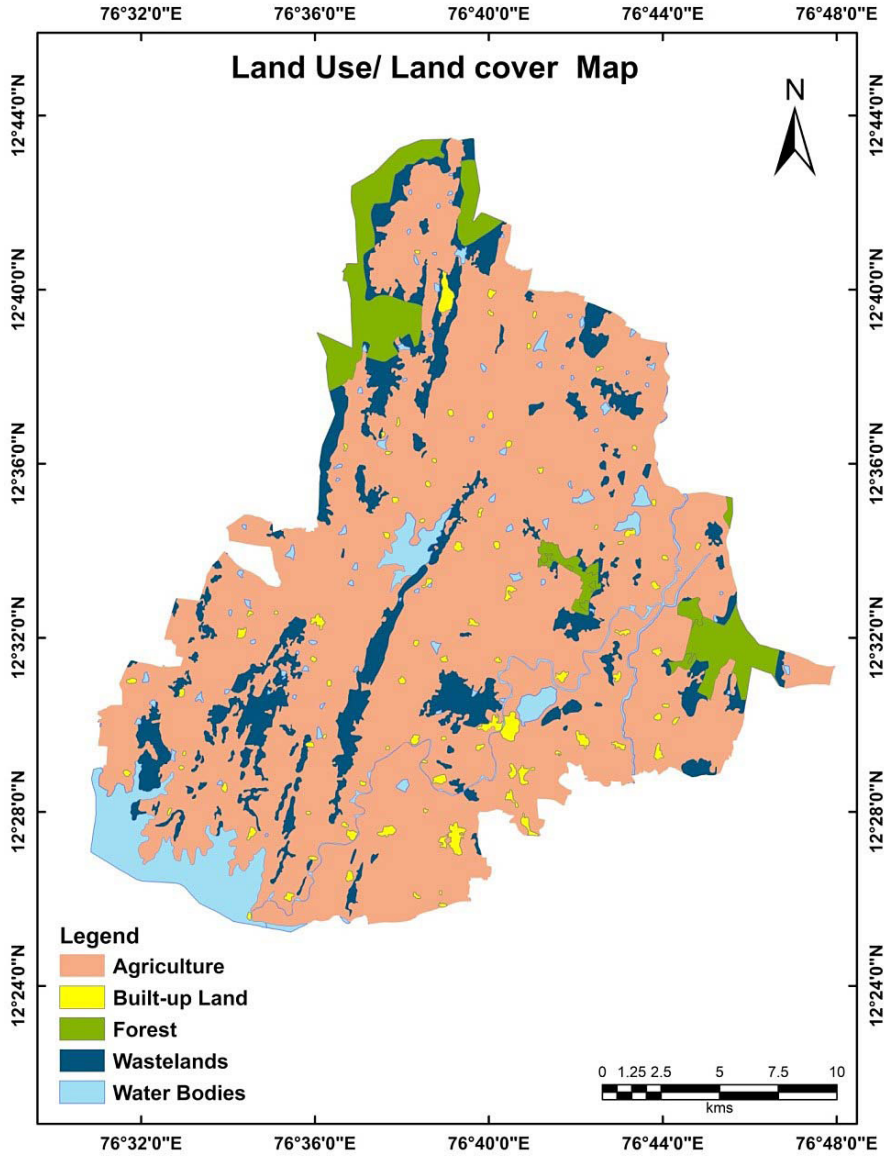


Fig. 8: Land Use/ Land Cover Map

In the following table individual attributes are assessed and given a rank from 5 as the highest importance for potential zones and 1 as the least

importance. The weightages and rankings of each thematic map and its respective factors are tabulated for calculating the overall weights.

Table 2: Weights assigned to groundwater governing parameter

Factor	Weight	Influence	Rank	Overall weight
Geomorphology				
Hills			1	38
Pediment			3	114
Pediment inselberg			3	114
Pediplain	0.38	38	3	114
Reservoir			4	190
River/stream			5	152
Lineament density				
Very high			5	95
High			4	76
Moderate	0.19	19	3	57
Low			2	38
Very low			1	19
Lithology				
Amphibolitic metapelitic schist			1	12
Metaultramafite			2	24
Metabasalt-Tuff			2	24
Migmatites & Granodiorite-tonalite gneiss	0.12	12	2	24
Pink-grey granite			2	24
slope				
0-1			5	50
1-2			4	40
2-3	0.1	10	3	30
3-5			2	20
>5			1	10
Soil				
Alfisols			2	16
inceptisol	0.08	8	4	32
Landuse/ land cover				
Agriculture			4	24.6
Built up land			1	6.6
Forest	0.06	6.6	3	19.8
Waste land			2	13.2
Water bodies			5	33
Drainage density				
Very high			1	6.4
High			2	12.8
Moderate	0.064	6.4	3	19.2
Low			4	25.6
Very low			5	32

Groundwater Potential Zone

All seven thematic layers were overlay depending on their weights to better delineate potential groundwater zones. Weights rely on the expertise

of experts and references from numerous works of literature to get a more accurate result. Employing the AHP method, the rankings, and weights allocated to individual parameters were calculated.

The potential groundwater zones were grouped into five categories based on their overall weightage. The five categories are very poor (6-150), poor (151-191), moderate (192-207), good (208-226), and excellent (227-307). (Table 3). 7.4% of the total area was identified as an excellent potential zone, 38.4% as a good potential zone, 33.2% as a moderate potential zone, 13.4% as a poor potential zone, and 4.2% as a very poor potential zone and approximately 3.4% of the region is comprised of reservoirs, which are not taken into account when assessing groundwater potential zone. (Table 3 & Fig. 9)

Table 3: Classification of Overall Weightages

Groundwater Potential Zone Categories	Overall Weightages
Very Poor	06 - 150
Poor	151 - 191
Moderate	192 - 207
Very Good	208 - 226
Excellent	227 - 307

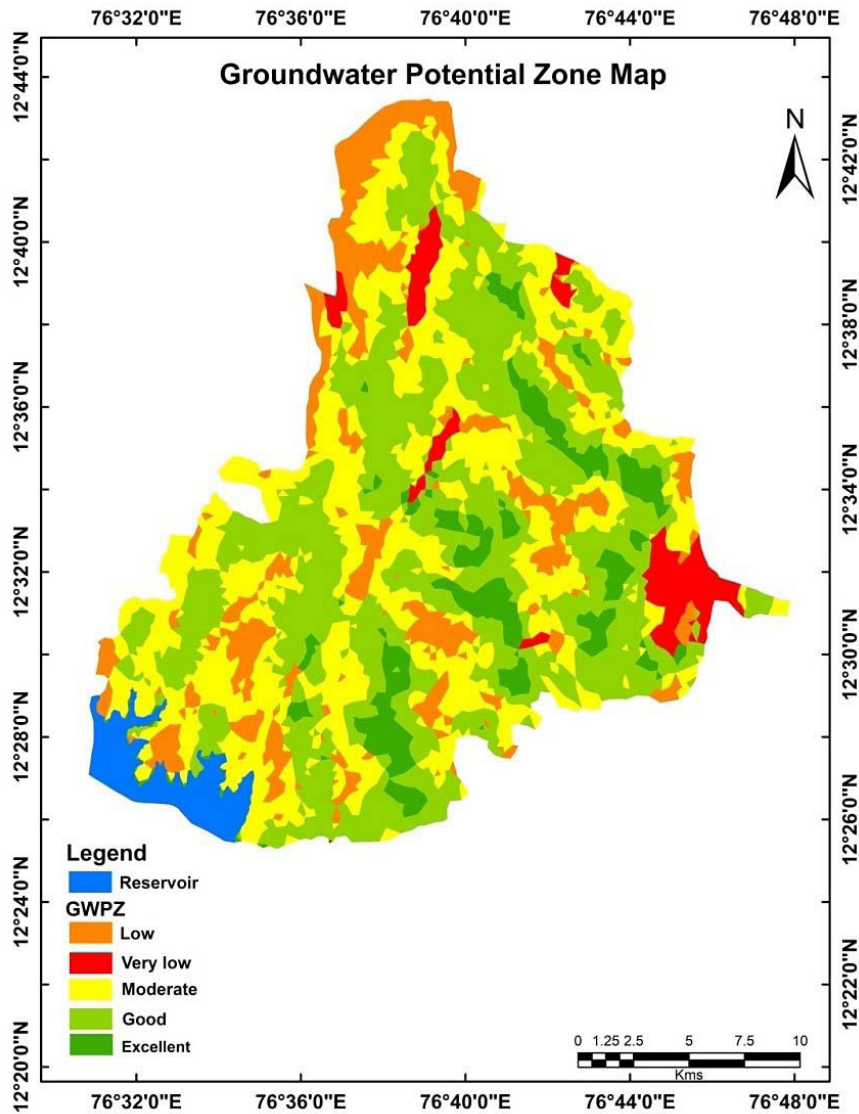


Fig. 9: Groundwater Potential Zone Map

Table 4: Average depth of the groundwater and its fluctuation (2012-2022).

Sl. No.	Village	Lat	Long	Pre-monsoon	Post monsoon	Fluctuation
1	Amruthi	12.62764	76.68003	7.62	5.48	2.14
2	Chinakuruli	12.53828	76.60361	14.3	11.45	2.85
3	Kadaba	12.58731	76.61208	13.18	10.78	2.4
4	Madeshwarapura	12.57153	76.67964	34.69	27.1	7.59
5	Melukote	12.66247	76.65047	6.54	4.54	2
6	Pandavapura	12.50422	76.67339	6.55	4.62	1.93
7	Sayappanahalli	12.45469	76.53555	23.64	16.93	6.71
8	Yelekere	12.47835	76.64485	3.24	2.18	1.06

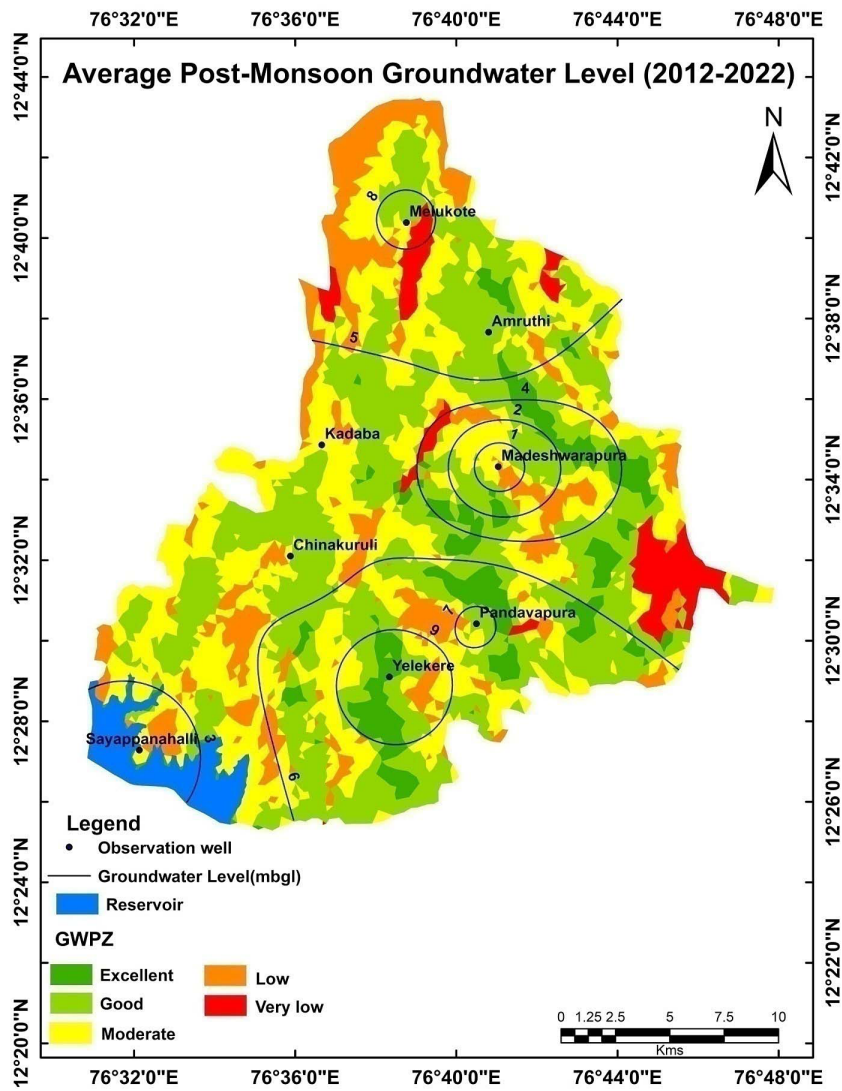


Fig. 10: Post-Monsoon Season Validation Map

Validation

For confirming the exactitude of potential zone for groundwater, ten years' worth of before-monsoon and after-monsoon season borewells level stats from 2012 to 2022 is collected from the minor irrigation and Groundwater directorate. Seasonal fluctuation is calculated. These are interpolated by the IDW method (inverse distance weighting), creating contours of five-meter intervals. These contours were placed on the GWPZ map to check their accuracy. The deep water level with high fluctuation well indicates a poor groundwater potentiality so in the research area, Sayappanahalli and Madeshwarapura have high fluctuation of <6mts with water depths of >15mbgl, those wells are surrounded by poor groundwater

potential zone Likewise, Amruthi and Pandavapura wells with <8mbgl (fluctuation<3mts) coincides with good groundwater potential zone while Melukote has perched water table conditions occurring at shallow depths. Similarly, Chinakuruli and Kadaba wells with <15mbgl (<3mts fluctuation) fall on the moderate groundwater potential zone, whereas Yelekere well with <4mbgl (fluctuation<1.5mts) falls on excellent groundwater potential zone, but due to a lack of data, the very poor groundwater potential zone is not validated. This result demonstrates that the method used to define the potential groundwater zone effectively gives valid results. (Table 4 & Figures 10, 11, and 12)

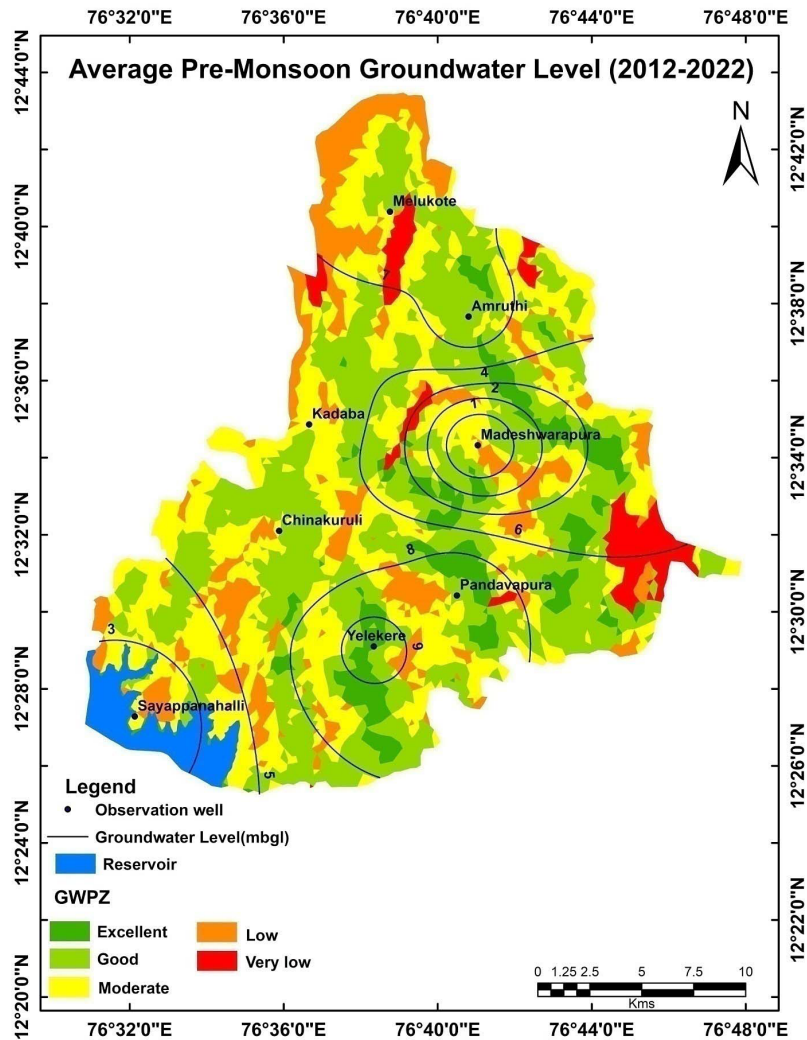


Fig. 11: Pre-Monsoon Season Validation Map.

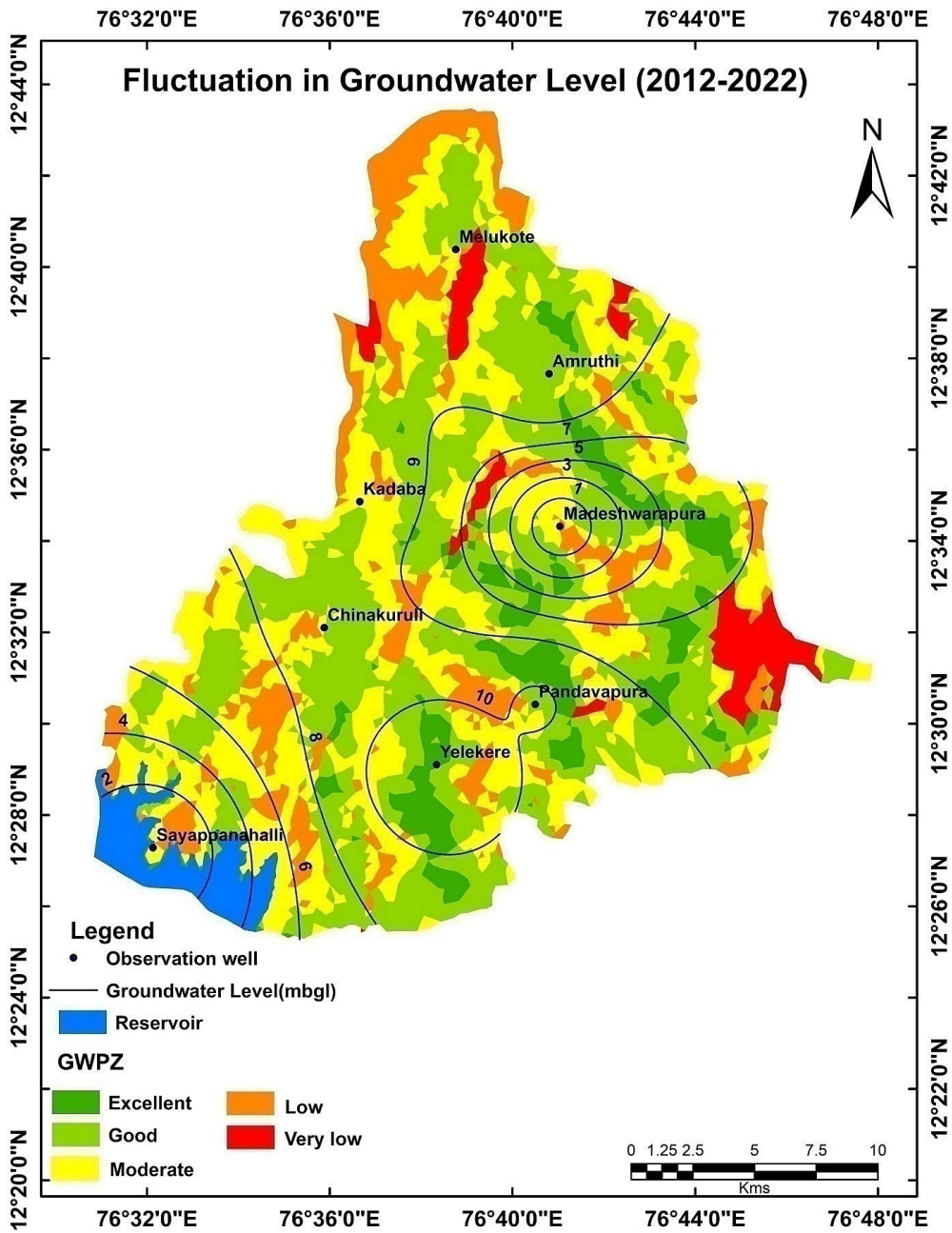


Fig. 12: Fluctuation Map

Conclusion

The current study used geospatial techniques paired with AHP to delineate potential groundwater zones in Pandavapura taluk by combining thematic layers. The excellent groundwater potential has been identified mainly in the southern region and

some portions of the eastern region along with an area of 39 km² due to a water body, ineceptisol soil texture, flat slope, very high lineament density, and low drainage density. A good potentiality zone for groundwater was scattered randomly throughout the investigation region encompassing 203.5 km²

area and characterized by high lineament density, agricultural land, gentle slope along with low drainage density. In certain areas, moderate potential zone of 176 km². This has pediplain, alfisols texture, medium drainage density, low lineament density, and a forest. Low potential zones appear as regions of adverse geomorphological conditions, alfisols soil texture, and wasteland encompassing an area of 71 km². Some areas of the country's northern, central, and western regions were found to have relatively low potential zones, characterized by hills, wastelands, high drainage density, low lineament density, and steeper slopes and cover an area of 22.3 km². Overall, GIS and AHP techniques give conceivably practical tools for analyzing potential groundwater zone. The conclusion map will aid policymakers,

government officials, and managers in the study area's sustainable groundwater development.

Acknowledgments

The authors acknowledge the help and direction they received from the Department of Studies in Earth Science at the University of Mysore in Mysuru. They are also thankful to the University of Mysore for providing a fellowship.

Funding

No monetary assistance was provided to the author(s) for the production of this article.

Conflict of interest

The authors have no competing interests.

Reference

1. Todd, D.K., Mays, L.W. *Ground Water Hydrology*. John Wiley and Sons, Inc. United States of America.; 2005.
2. Ali S, Singh R. Morphological and hydrological investigation in Hirakud catchment for watershed management planning. *J Soil Water Conserv.* 2000;1:246-256.
3. Agumase T. Kindie, Temesegen Enku, Mamaru A. Moges, Berhanu S. Geremew and HBA. *Advances of Science and Technology*. Vol 274. Springer International Publishing; 2019. doi:10.1007/978-3-030-15357-1
4. Ettazarini S. Groundwater potentiality index: A strategically conceived tool for water research in fractured aquifers. *Environ Geol.* 2007;52:477-487. doi:10.1007/s00254-006-0481-0
5. Biswas A. Delineation of Groundwater potential zones using Remote Sensing and Geographic Information System Techniques: A case study from Ganjam district, Orissa. *Res J Recent Sci* 2277-2502. 2012;1:59-66.
6. Kanagaraj G, Suganthi S, Elango L, Magesh NS. Assessment of groundwater potential zones in Vellore district, Tamil Nadu, India using geospatial techniques. *Earth Sci Informatics.* 2019;12(2):211-223. doi:10.1007/s12145-018-0363-5
7. Yeh HF, Cheng YS, Lin HI, Lee CH. Mapping groundwater recharge potential zone using a GIS approach in Hualian River, Taiwan. *Sustain Environ Res.* 2016;26(1):33-43. doi:10.1016/j.serj.2015.09.005
8. Rajasekhar M, Sudarsana Raju G, Sreenivasulu Y, Siddi Raju R. Delineation of groundwater potential zones in semi-arid region of Jilledubanderu river basin, Anantapur District, Andhra Pradesh, India using fuzzy logic, AHP and integrated fuzzy-AHP approaches. *HydroResearch.* 2019;2:97-108. doi:https://doi.org/10.1016/j.hydres.2019.11.006
9. Rahaman A, Biswas B, Barman J, Suresh VM, Kishor B, Das J. Delineation of Groundwater Potential Zones Through AHP: A Case Study from Tamil Nadu, India. *Monitoring and Managing Multi-hazards*. Published online December 3, 2022:315-329. doi:https://doi.org/10.1007/978-3-031-15377-8_21
10. Basak D, Bose A, Roy S, Chowdhury IR. Understanding the forest cover dynamics and its health status using GIS-based analytical hierarchy process. *Water, Land, and Forest Susceptibility and Sustainability*. Published online 2023:475-508. doi:https://doi.org/10.1016/b978-0-323-91880-0.00014-3
11. Pandey HK, Singh V, Sudhir Kumar Singh. Multi-criteria decision making and Dempster-Shafer model-based delineation

- of groundwater prospect zones from a semi-arid environment. *Environmental Science and Pollution Research*. 2022;29(31):47740-47758. doi:<https://doi.org/10.1007/s11356-022-19211-0>
12. Daouda Nsangou, Amidou Kpoumié, Zakari Mfonka, Bateni SM, Abdou Nasser Ngouh, Remy J. The Mfoundi Watershed at Yaoundé in the Humid Tropical Zone of Cameroon: A Case Study of Urban Flood Susceptibility Mapping. *Earth Systems and Environment*. 2021;6(1):99-120. doi:<https://doi.org/10.1007/s41748-021-00276-9>
 13. Manap MA, Sulaiman WNA, Ramli MF, Pradhan B, Surip N. A knowledge-driven GIS modeling technique for groundwater potential mapping at the Upper Langat Basin, Malaysia. *Arabian Journal of Geosciences*. 2011;6(5):1621-1637. doi:<https://doi.org/10.1007/s12517-011-0469-2>
 14. Sar N, Khan A, Chatterjee S, Das A. Hydrologic delineation of ground water potential zones using geospatial technique for Keleghai river basin, India. *Modeling Earth Systems and Environment*. 2015;1(3). doi:<https://doi.org/10.1007/s40808-015-0024-3>
 15. Duguma TA, Duguma GA. Assessment of Groundwater Potential Zones of Upper Blue Nile River Basin Using Multi-Influencing Factors under GIS and RS Environment: A Case Study on Guder Watersheds, Abay Basin, Oromia Region, Ethiopia. Senapathi V, ed. *Geofluids*. 2022;2022:1-26. doi:<https://doi.org/10.1155/2022/1172039>
 16. Wambui GT, Wandubi DE, Njuguna KZ, Ochieng OD. Application of analytical hierarchy process and integrated fuzzy-analytical hierarchy process for mapping potential groundwater recharge zone using GIS in the arid areas of Ewaso Ng'iro – Lagh Dera Basin, Kenya. *HydroResearch*. Published online February 2022. doi:<https://doi.org/10.1016/j.hydres.2021.11.001>
 17. Goswami T, Ghosal S. Understanding the suitability of two MCDM techniques in mapping the groundwater potential zones of semi-arid Bankura District in eastern India. *Groundwater for Sustainable Development*. 2022;17:100727. doi:<https://doi.org/10.1016/j.gsd.2022.100727>
 18. Karam J, Katramiz E, Ghali K, Ghaddar N. Effective mitigation of cross-contamination in classroom conditioned by intermittent air jet cooling with use of portable air cleaners. *Building and Environment*. 2022;219:109220. doi:<https://doi.org/10.1016/j.buildenv.2022.109220>
 19. Nag S, Roy MB, Roy PK. Study on the functionality of land use land cover over the evaluation of groundwater potential zone: A fuzzy AHP based approach. *Journal of Earth System Science*. 2022;131(3). doi:<https://doi.org/10.1007/s12040-022-01872-7>
 20. Pande CB, Moharir KN, Panneerselvam B, et al. Delineation of groundwater potential zones for sustainable development and planning using analytical hierarchy process (AHP), and MIF techniques. *Applied Water Science*. 2021;11(12). doi:<https://doi.org/10.1007/s13201-021-01522-1>
 21. Rather AF, Ahmed R, Wani GF, et al. Mapping of groundwater potential zones in Pohru Watershed of Jhelum Basin-Western Himalaya, India using integrated approach of remote sensing, GIS and AHP. *Earth Science Informatics*. 2022;15(4):2091-2107. doi:<https://doi.org/10.1007/s12145-022-00824-5>
 22. Singha SS, Pasupuleti S, Singha S, Singh R, Venkatesh AS. Analytic network process based approach for delineation of groundwater potential zones in Korba district, Central India using remote sensing and GIS. *Geocarto International*. Published online August 8, 2019:1-23. doi:<https://doi.org/10.1080/10106049.2019.1648566>
 23. Tien Bui D, Shirzadi A, Chapi K, et al. A Hybrid Computational Intelligence Approach to Groundwater Spring Potential Mapping. *Water*. 2019;11(10):2013. doi:<https://doi.org/10.3390/w11102013>
 24. Vellaikannu A, Palaniraj U, Karthikeyan S, Senapathi V, Viswanathan PM, Sekar S. Identification of groundwater potential zones using geospatial approach in Sivagangai district, South India. *Arabian Journal of Geosciences*. 2021;14(1). doi:<https://doi.org/10.1007/s12040-021-01872-7>

- org/10.1007/s12517-020-06316-4
25. Yossa MT, Lordon AED, Agyingi CM, Agbor-Taku J, Shandini YN, Bessong CE. Remote sensing and geographic information system (GIS)-based high-resolution mapping of potential groundwater recharge zones on the hard rock terrains of the Cameroon volcanic line (CVL). *SN Applied Sciences*. 2022;5(1). doi:<https://doi.org/10.1007/s42452-022-05248-w>